



LLR Resilience Preparedness

Julia Draycon

LLR Prepared and Resilience Partnership
Coordinator

Andrew Murr

Resilience Manager, Leicestershire County
Council

Civil Contingencies Act





**Resilience
Partnership**
LEICESTER · LEICESTERSHIRE · RUTLAND



Hinckley & Bosworth
Borough Council

A Borough to be proud of



Oadby and Wigston
Borough Council
Leicestershire





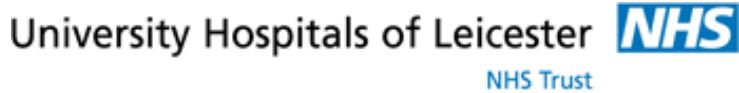
Leicestershire Police
Protecting our communities



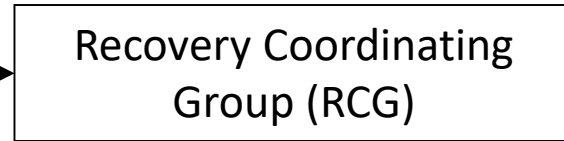
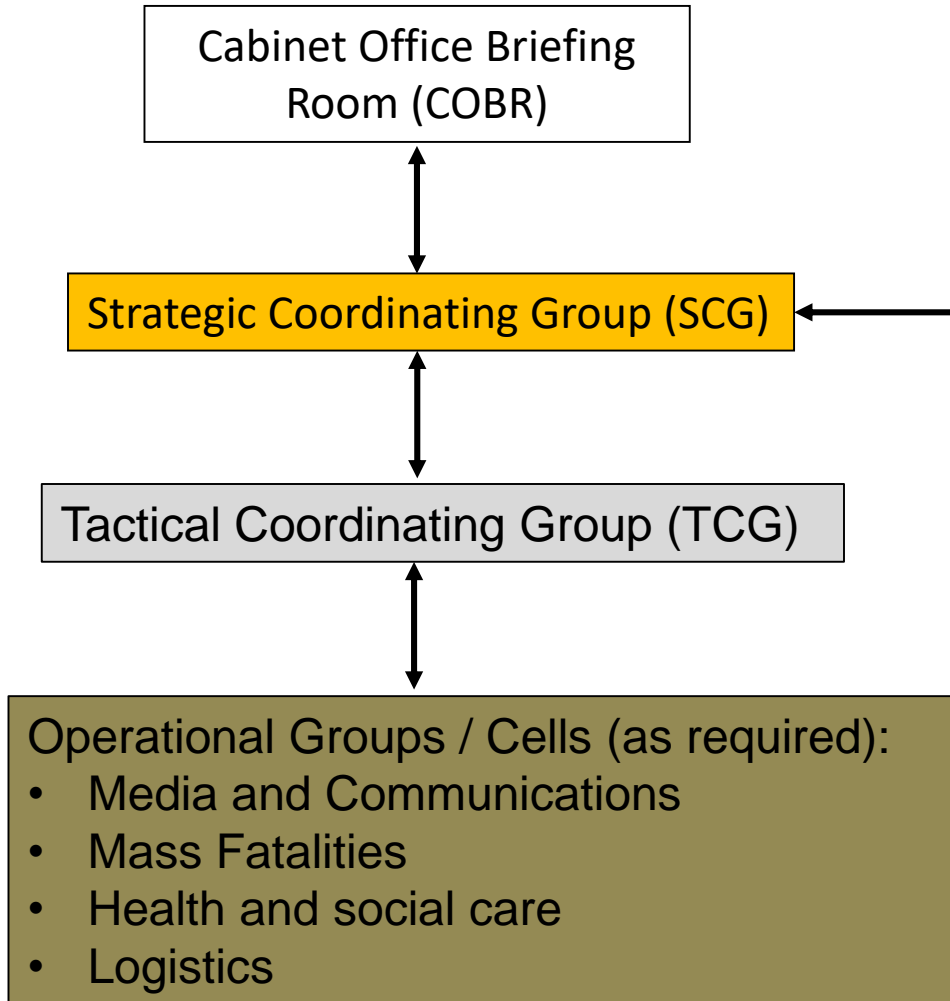
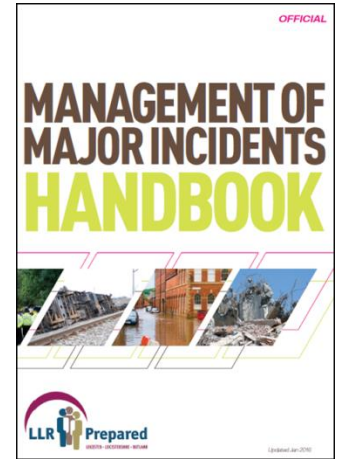
4



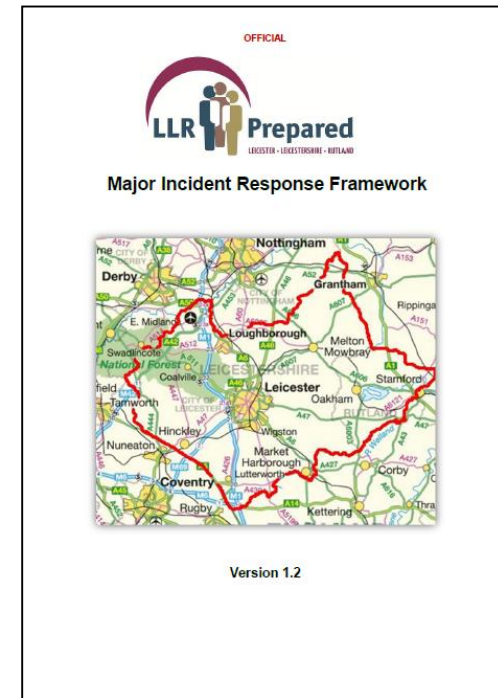
Hinckley & Bosworth Borough Council
A Borough to be proud of



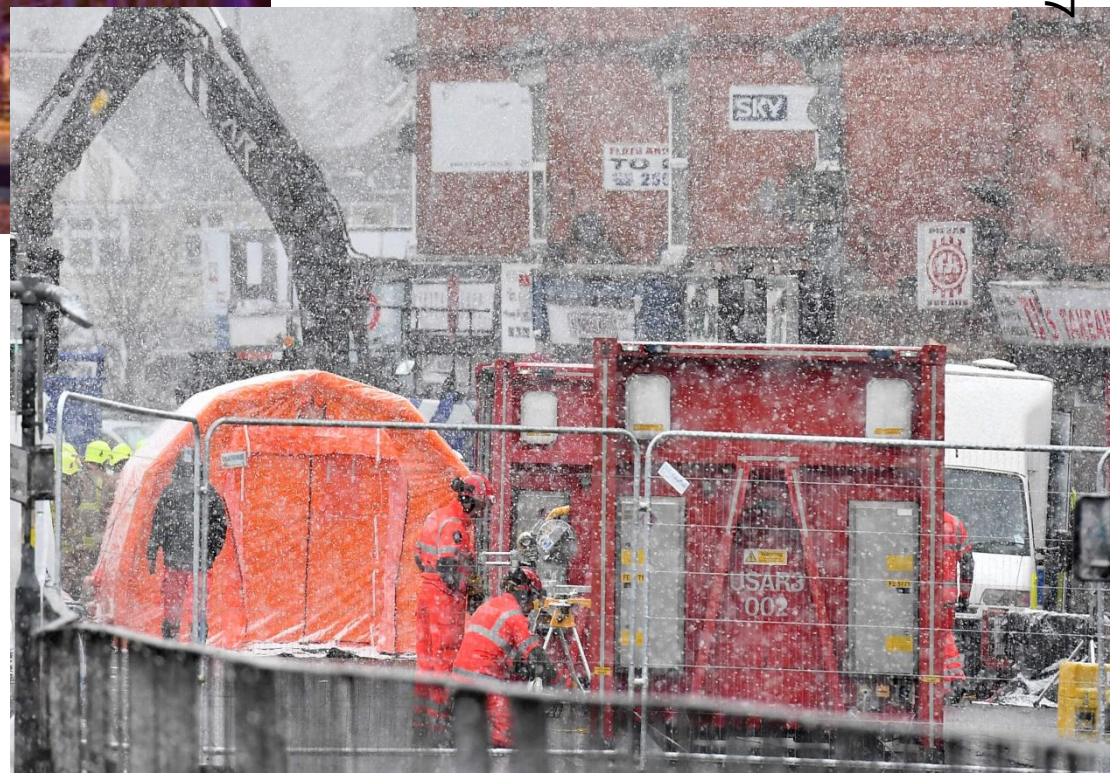
Multi-Agency Response



5









Multi-Agency Response Plans



Other Incidents



KEEP YOUR BIRDS SAFE

Avian Influenza (bird flu) is a notifiable poultry disease. To prevent it spreading, government has put in place a Prevention Zone (including a housing order) that applies to ALL poultry.

Keep your birds safe by following our tips...



HOUSE YOUR BIRDS
or at least separate them from wild birds



DETER WILD BIRDS
Give your birds more space by using a fine mesh to create a run



FEED AND WATER
your birds in an area which wild birds can't access



OCCUPY YOUR BIRDS
by giving them something to peck and play with like a straw bale or cardboard



MITES, WORMS ETC.
Keep an eye out and treat if necessary



RODENT CONTROL
is essential



WATER SOURCES
Avoid sharing with wild birds



KEEP YOURSELF CLEAN
boots, clothes, hands etc



CALL YOUR VET
if you're worried about the health or welfare of your birds



NON-COMPLIANCE
may be an offence

More information on Avian Influenza can be found at NFUONLINE.COM/AIHUB



Learning from other incidents



The Kerslake Report:

An independent review into the preparedness for, and emergency response to, the Manchester Arena attack on 22nd May 2017

10

EMBARGOED UNTIL NOON ON TUESDAY 27TH MARCH

Questions?

This page is intentionally left blank